

# Watch: Large Cruise Ship Close Call in Venice Canal – Updated with AIS

July 10, 2019 by Mike Schuler



No comment



A hair-raising video from over the weekend shows the Costa Deliziosa cruise ship nearly crash\* during a storm in Venice's Grand Canal on Sunday.

As you can see from the video above, the large cruise ship was navigating the canal with the assistance of two tugs when it came dangerously close to hitting a yacht docked at the Venice waterfront.

The incident comes about a month after the MSC Opera **struck a moored passenger vessel in Venice**, injuring four people and reigniting the debate over large cruise ships' place in the Venice Lagoon.

We haven't been able to verify, but as **one Redditor points out**, the yacht in the video appears to be the luxury yacht Equanimity (now renamed to Tranquility), which was seized by Malaysian authorities as part of the **1MDB scandal** and later sold to Genting for \$126 million.

**\*Update:** Many online have been questioning just how close the ship came was to the pier, pointing to the below video taken from a different angle:

**Maltempo a Venezia, nave da crociera rischia di schiantarsi sulla banchina**



However, while the video above does not appear as dramatic as the first, a look at the AIS track overlaid with the ship's dimensions shows that, at least according to the video, the ship came to within 19 meters from the wall, but unfortunately the yacht is not displayed.

## Costa Deliziosa July 7 2019



So how close was it? Let us know what you think...

---

### Related gCaptain Articles



Incident Video: MSC  
Cruise Ship Crashes  
Into Pier in Venice



Get Ship Done T-Shirt



Spain's Most  
Expensive Cruise Ship  
Launched for Ritz-  
Carlton



Click And Subscribe To  
gCaptain

---

Powered by

Filed Under: Interesting, Maritime News, Video

Tagged With: incident video, venice, venice cruise ban

---

SPONSORED BY

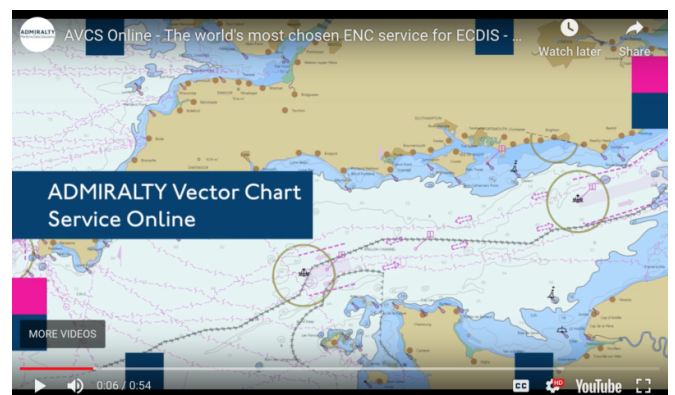
SIGN UP FOR GCAPTAIN DAILY

Join the 50,948 smart Maritime Professionals  
that receive our daily newsletter.

Your email address

SIGN UP

SPONSORED POST



ADMIRALTY Vector Chart Service (AVCS)  
now available online to support shore-based  
decision making

👍 FEATURED



Watch: U.S. Coast Guard Crew Chases Down Narco Sub in the Pacific

---



Watch: Large Cruise Ship Close Call in Venice Canal - Updated with AIS

---



U.S. Authorities Seize MSC Gayane After Record Drug Bust

---



## Neoline Selects Shipyard to Construct Modern Sail-Powered Cargo Ship

---



## Record-Setting BOKA Vanguard to Serve as Dry Dock for Carnival Cruise Ship

▶ VIDEO



## Watch: U.S. Coast Guard Crew Chases Down Narco Sub in the Pacific

---



## Viral Video Shows Passenger Cruise Take on Huge Breaking Waves

---



## Watch: Large Cruise Ship Close Call in Venice Canal - Updated with AIS

### LATEST NEWS

## Trade War Hits Panama Canal Revenues

---

**ADMIRALTY** Vector Chart Service (AVCS) now available online to support shore-based decision making

---

## Baltic Dry Index Hits 5-1/2 Year High